

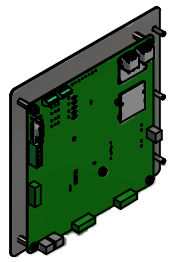
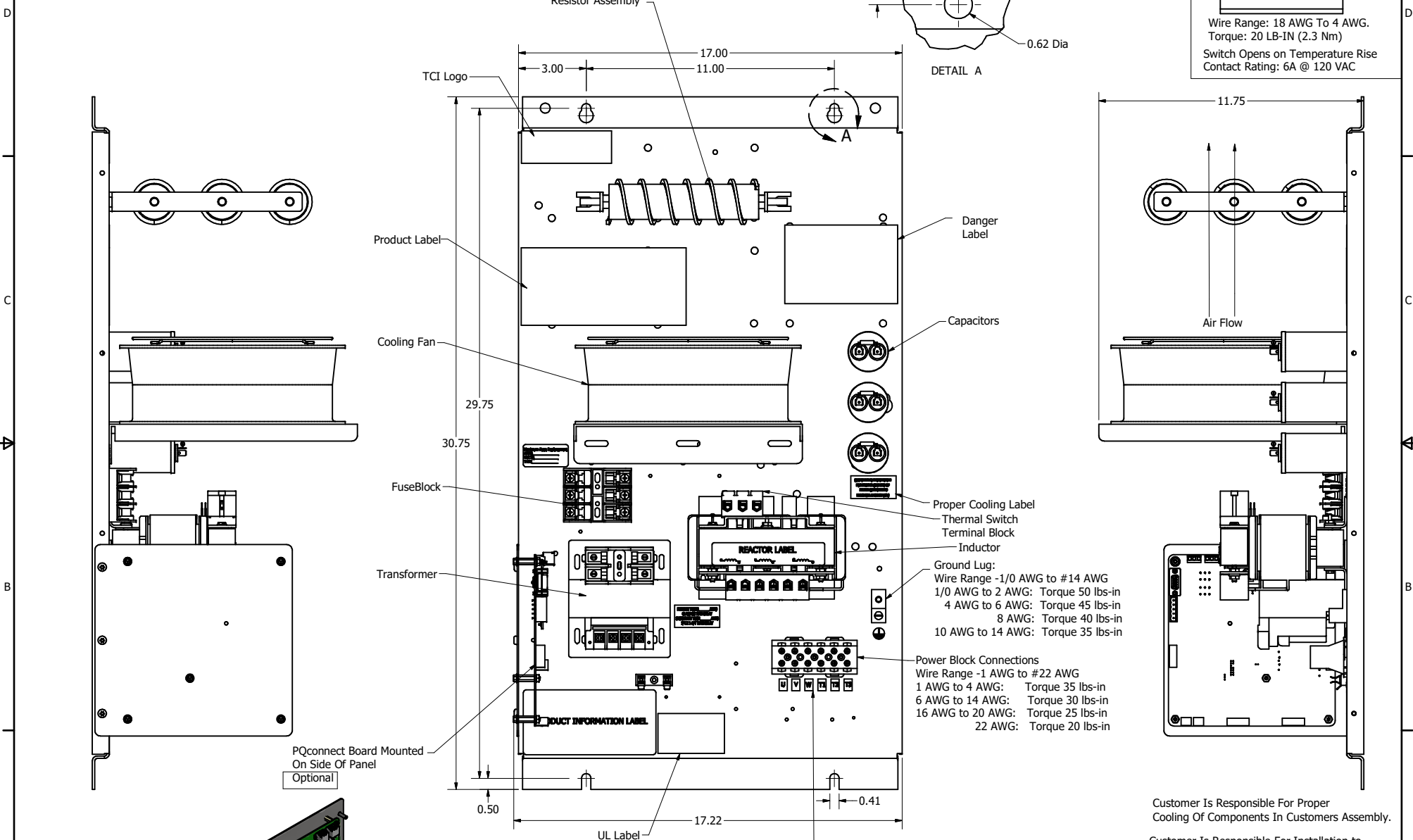
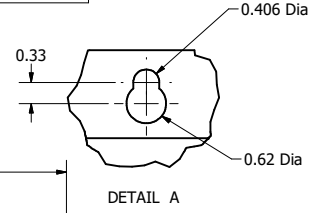
SineWave Part Number	Schematic Drawing#	Approx Weight (LBS)
KMG16A00A	24281-1A	69
KMG16A00P	24281-1P	70

HorsePower (HP)	kVar	Max Amps	Voltage (V)	HZ	Phase
10	1.85	16	480	60	3

1

Thermal Switch Terminal Block

Wire Range: 18 AWG To 4 AWG.
Torque: 20 LB-IN (2.3 Nm)
Switch Opens on Temperature Rise
Contact Rating: 6A @ 120 VAC



Customer Is Responsible For Proper Cooling Of Components In Customers Assembly.
Customer Is Responsible For Installation to Meet All National And Local Electrical Codes.

U V W T1 T2 T3

TCI, LLC CLAIMS PROPRIETARY RIGHTS IN THE MATERIAL HEREIN DISCLOSED. IT IS SUPPLIED WITHOUT PREJUDICE TO ANY PATENT RIGHTS OF TCI AND MAY NOT BE REPRODUCED OR USED TO MANUFACTURE ANYTHING SHOWN THEREIN WITHOUT WRITTEN PERMISSION FROM TCI.				TOLERANCES (EXCEPT AS NOTED)		W132 N10611 Grant Drive Germantown, WI 53022 KMG16A000 , SineWave Filter Open Panel, 10HP, 480V	
				DECIMAL	.XX ±.25	DSN BY: DSW DATE: 10/04/2016 104328DG SCALE: 1/8	
				FRACTIONAL	± 1/16	REVISION DATE BY	
C Add PQconnect Board				6/17/2020	DSW	ANGLAR ± 1°	
NO				REVISION	DATE	BY	SHEET 1 OF 1

Material(s) Shall be RoHS Compliant